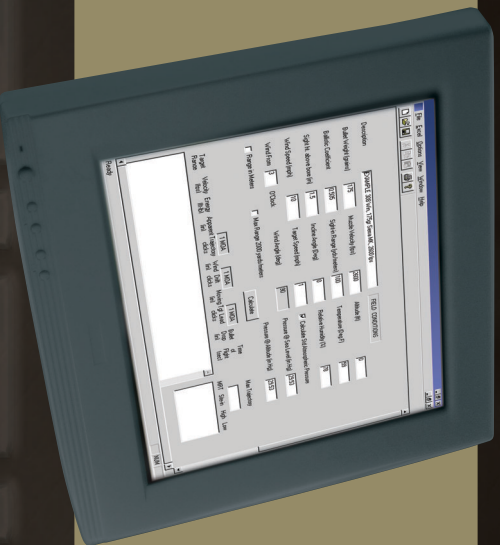


## Nightforce Ballistic Software for PC and Pocket PC



### Incredible performance, incredible price.

At no other time have shooters had access to technology that has such far reaching and measurable effect on their ability to improve accuracy. Nightforce brings powerful tools to bear against the physical forces that influence a bullet's path. Nightforce Ballistic Software for Windows and Pocket PC improves accuracy, effectively closing the distance between shooters and their targets.

For less than the cost of a good pair of boots, Nightforce Ballistic Software can enhance the results you currently see from your selection of rifle, scope and ammunition.

### An accurate shot every time.

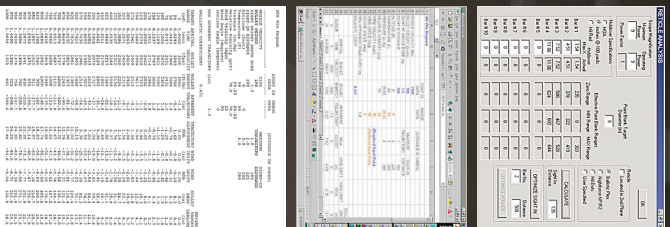
The Nightforce Ballistic Program is the world's most accurate. Finally there is a simple program for the shooter who requires fast and accurate data in the field. This program is essential for the shooter who wants to send the bullet accurately down range. The Nightforce Ballistic Program provides the shooter with an understanding of how to optimize equipment and hit targets at incredible distances in real-world conditions.

#### The Nightforce Ballistic Program for Pocket PC.

This version enables the shooter to take the ballistic calculator into the field. The Nightforce Ballistic Program for Pocket PC is designed to provide a shooter's zero-point solution for a particular target distance. The Pocket PC version enables the shooter to overcome all changes experienced in the field.

#### The Nightforce Ballistic Program for Windows.

The Windows version of this software possesses the same features and capabilities of the Pocket PC version and boasts additional features, allowing the user to input, store, print and export data.



### Factory ammunition.

This ballistic software has several options to help you specify the data about the ammunition you want to analyze. The program contains the most comprehensive database for commercially loaded ammunition of any program, including Federal, Hornady, Remington, Winchester, and Black Hills, and many more.

### Unprecedented library of ballistic coefficients.

This extensive library contains more than 500 ballistic coefficients from bullet manufacturers such as Barnes, Berger, Hornady, Lapua, Lost River Ballistics, Nosler, Sierra, Speer, and Swift. The shooter will be amazed at the diversity of bullet selection and the speed of which information can be obtained, eliminating the need to contact bullet manufacturers to obtain the ballistic coefficient of a bullet. This library enables the user to specify multiple ballistic coefficients to accommodate data from Sierra Bullets which specifies ballistic coefficients based on velocity, or from independently developed drag coefficient sources.

### Capabilities and features.

- Formulates zero-point solutions to hit long range targets
- Reorders and recalcs sight-in data for location and conditions
- Profiles of all ammunition/atmospheric condition scenarios
- Performs all necessary calculations for ranging reticles
- Calculates corrections in MOA, IPH, Z, MILs and C.P.H.M.
- Prints reference cards, plot graphs and drop charts
- Comprehensive manufacturer ammunition database
- Library of more than 500 ballistic coefficients
- Export data to Excel spreadsheets
- Available for Windows and Pocket PC
- Versions sold separately or as a bundle
- Affordable for every class of hunter and shooter



### Calculates correction.

The Nightforce Ballistic Program provides the shooter with all corrections in minutes of angle (MOA), inches per hundred yards, (IPHY), Mill-Radian (Mils) and centimeters per hundred meters (CPHM).

### Print your data.

Shooters can output their data to Excel spreadsheets. This powerful extension provides users with unlimited capabilities for further analysis such as comparing loads, generating reference cards, plot graphs and custom drop charts.

### Remember sight-in conditions.

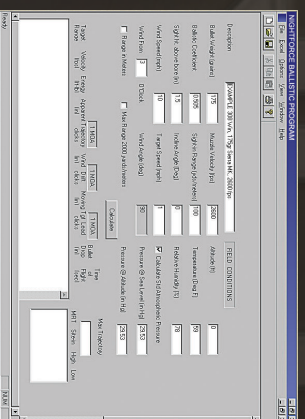
This option makes it possible to save the sight-in data acquired under one set of atmospheric conditions, and eliminate the need to sight in after arriving at the new location.

### Trajectory validation.

Multi-dimensional technology, known as trajectory validation, makes the Nightforce ballistic program more accurate than any other commercially available ballistic software.

### Ballistic reticle analysis.

This feature allows the shooter to optimize the use of range finder ballistic reticles by changing the magnification or sight-in distance so that one or more of the reference bars, dots and circles will coincide with where the shooter wants at a specific distance.



*A simple user interface on your PC at home or on your Pocket PC in the field can greatly improve the accuracy of shooters with easy input, organization of data and portability of information for analysis and quick reference.*